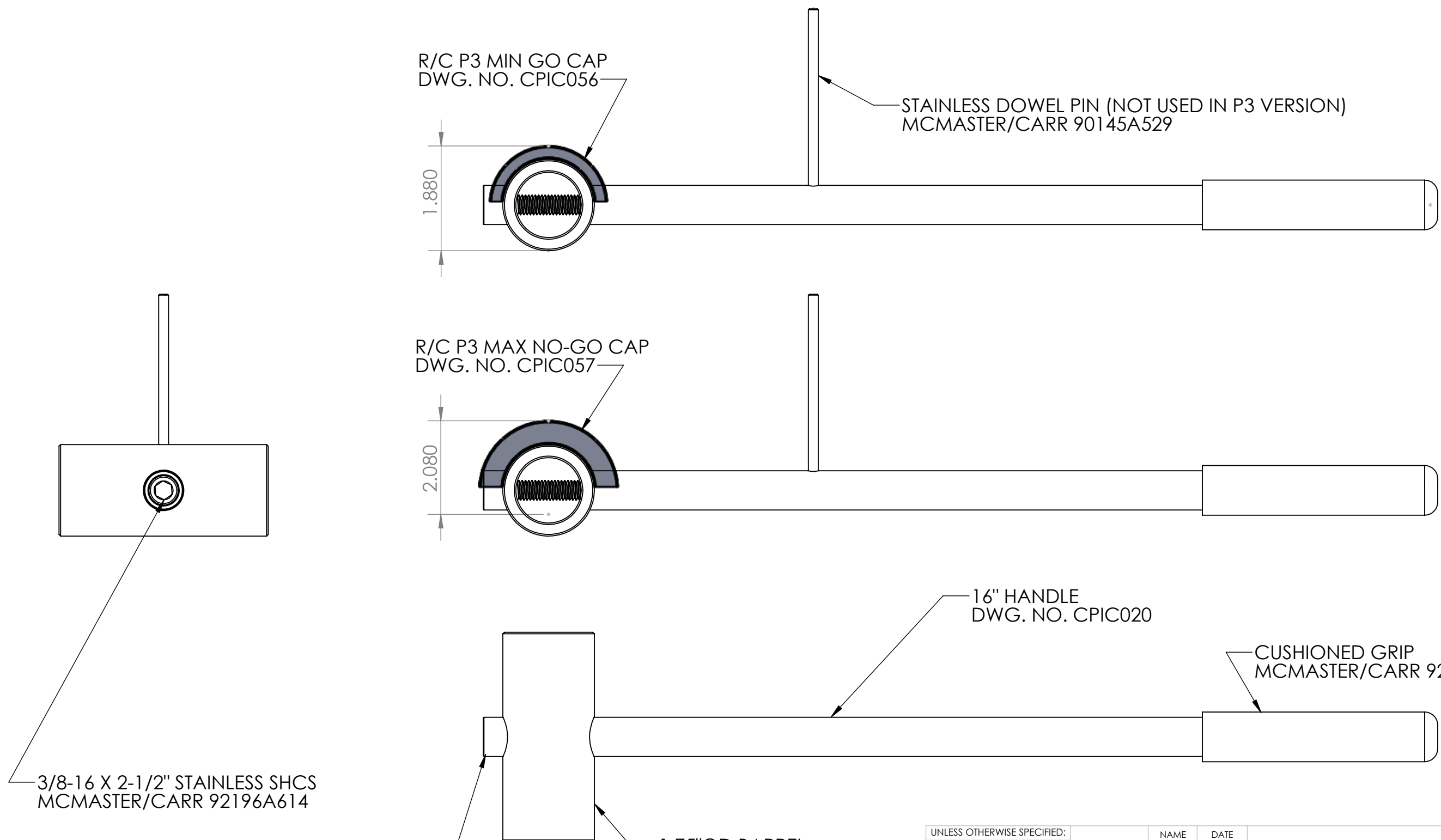


8 7 6 5 4 3 2 1

D  
C  
B  
A

D  
C  
B  
A



3/8-16 X 2-1/2" STAINLESS SHCS  
MCMaster/CARR 92196A614

END CAP  
DWG. NO. CPIC021

1.75"OD BARREL  
DWG. NO. CPIC032

16" HANDLE  
DWG. NO. CPIC020

CUSHIONED GRIP  
MCMaster/CARR 9282K16

R/C P3 MIN GO CAP  
DWG. NO. CPIC056

R/C P3 MAX NO-GO CAP  
DWG. NO. CPIC057

STAINLESS DOWEL PIN (NOT USED IN P3 VERSION)  
MCMaster/CARR 90145A529

UNLESS OTHERWISE SPECIFIED:

DIMENSIONS ARE IN INCHES

TOLERANCES:  
FRACTIONAL: ± 1/32  
ANGULAR: ±0.5°  
2 PLACE DECIMAL: ±.02  
3 PLACE DECIMAL: ±.005

INTERPRET GEOMETRIC  
TOLERANCING PER: ANSI Y14.5M-1994

MATERIAL

FINISH

DO NOT SCALE DRAWING

	NAME	DATE
DRAWN	C. Phillips	12/10/18
CHECKED		
ENG APPR.		
MFG APPR.		
Q.A.		



TITLE:  
**R/C P3 Guage**

SIZE **B** DWG. NO. **CPIC005** REV

SCALE: WEIGHT: SHEET 1 OF 1

PROPRIETARY AND CONFIDENTIAL  
THE INFORMATION CONTAINED IN THIS  
DRAWING IS THE SOLE PROPERTY OF  
CHECKERED PAST MACHINE.  
ANY REPRODUCTION IN PART OR AS A  
WHOLE WITHOUT THE WRITTEN  
PERMISSION OF CHECKERED PAST  
MACHINE IS PROHIBITED.

8 7 6 5 4 3 2 1