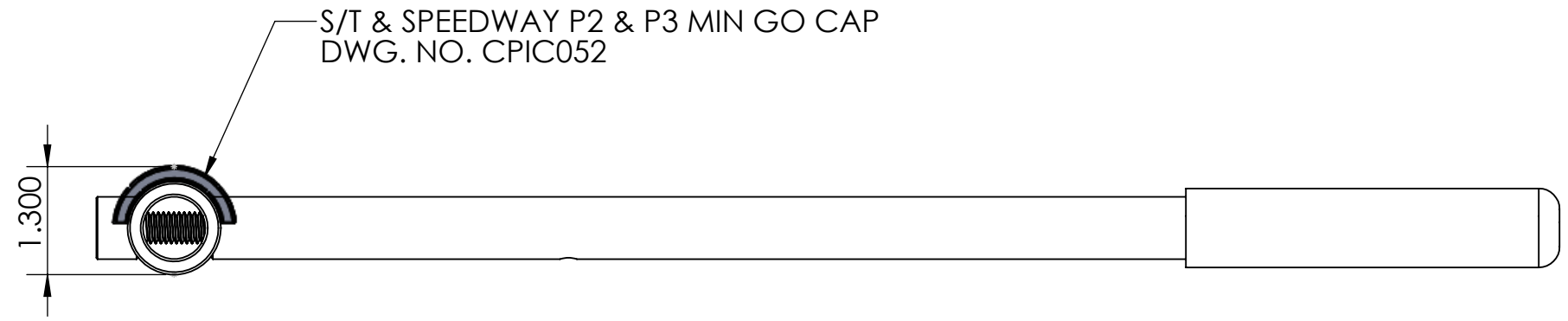


8 7 6 5 4 3 2 1

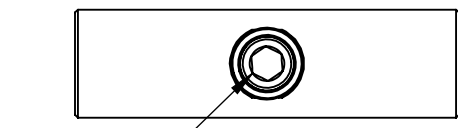
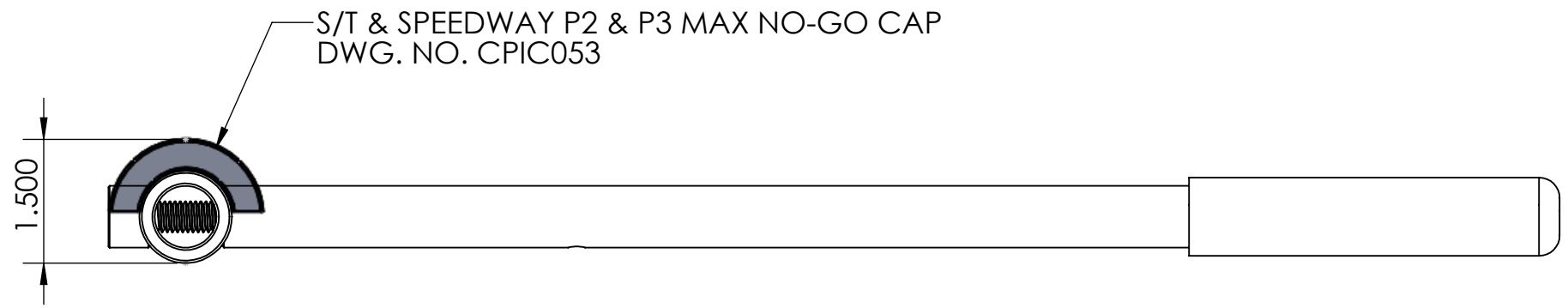
D

D



C

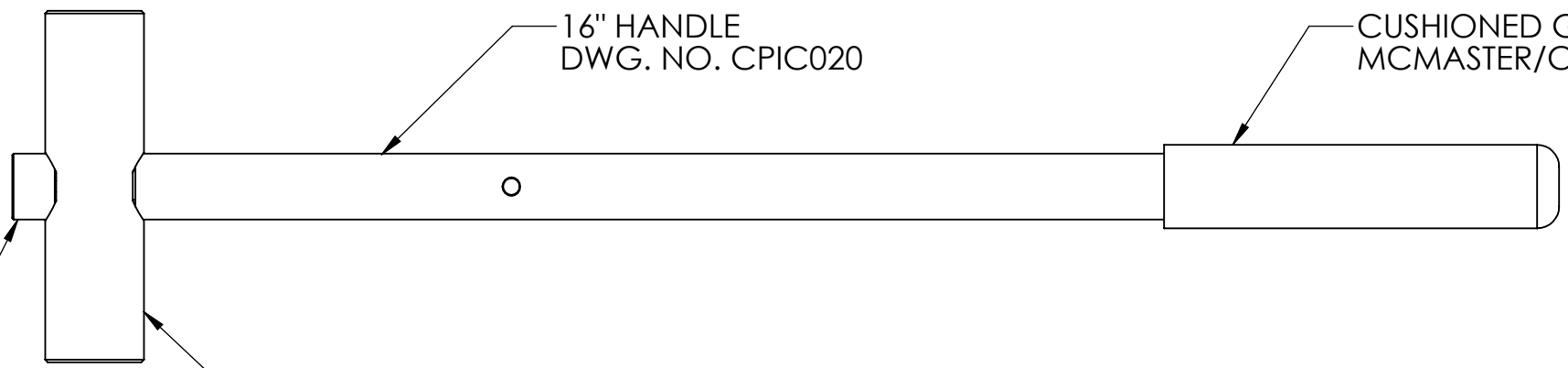
C



3/8-16 X 2-1/2" STAINLESS SHCS
MCMaster/CARR 92196A614

B

B



END CAP
DWG. NO. CPIC021

1.125"OD BARREL
DWG. NO. CPIC031

A

A

PROPRIETARY AND CONFIDENTIAL
THE INFORMATION CONTAINED IN THIS
DRAWING IS THE SOLE PROPERTY OF
CHECKERED PAST MACHINE.
ANY REPRODUCTION IN PART OR AS A
WHOLE WITHOUT THE WRITTEN
PERMISSION OF CHECKERED PAST
MACHINE IS PROHIBITED.

UNLESS OTHERWISE SPECIFIED:	
DIMENSIONS ARE IN INCHES	
TOLERANCES:	
FRACTIONAL: ± 1/32	
ANGULAR: ±0.5°	
2 PLACE DECIMAL: ±.02	
3 PLACE DECIMAL: ±.005	
INTERPRET GEOMETRIC TOLERANCING PER: ANSI Y14.5M-1994	
MATERIAL	
FINISH	
DO NOT SCALE DRAWING	

	NAME	DATE
DRAWN	C. Phillips	12/10/18
CHECKED		
ENG APPR.		
MFG APPR.		
Q.A.		



TITLE: S/T & SPEEDWAY P2 & P3 Guages		
SIZE B	DWG. NO. CPIC002	REV
SCALE:	WEIGHT:	SHEET 1 OF 1

8 7 6 5 4 3 2 1