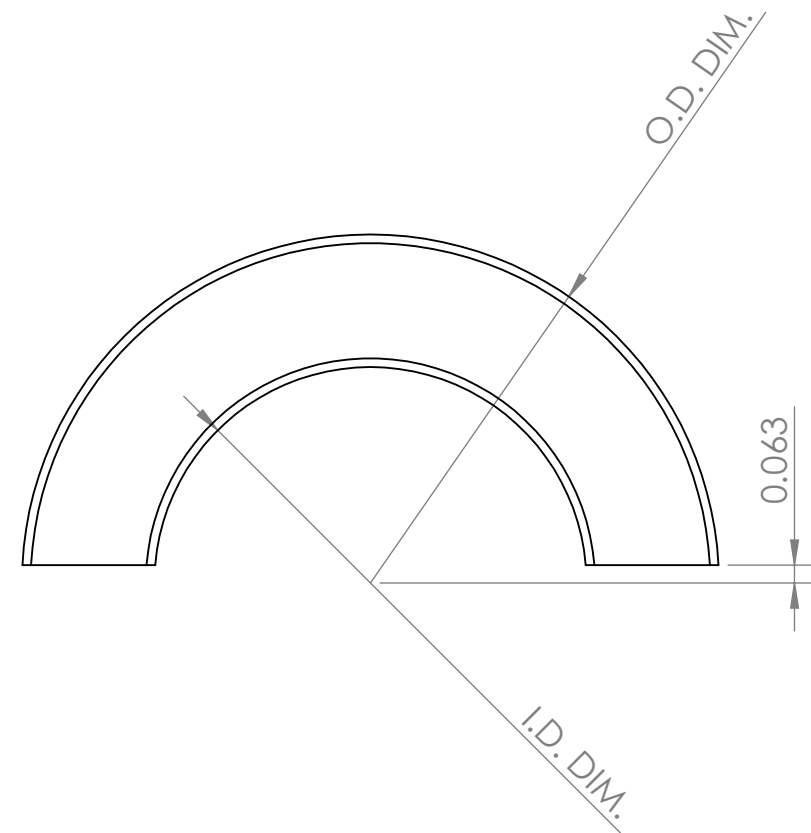
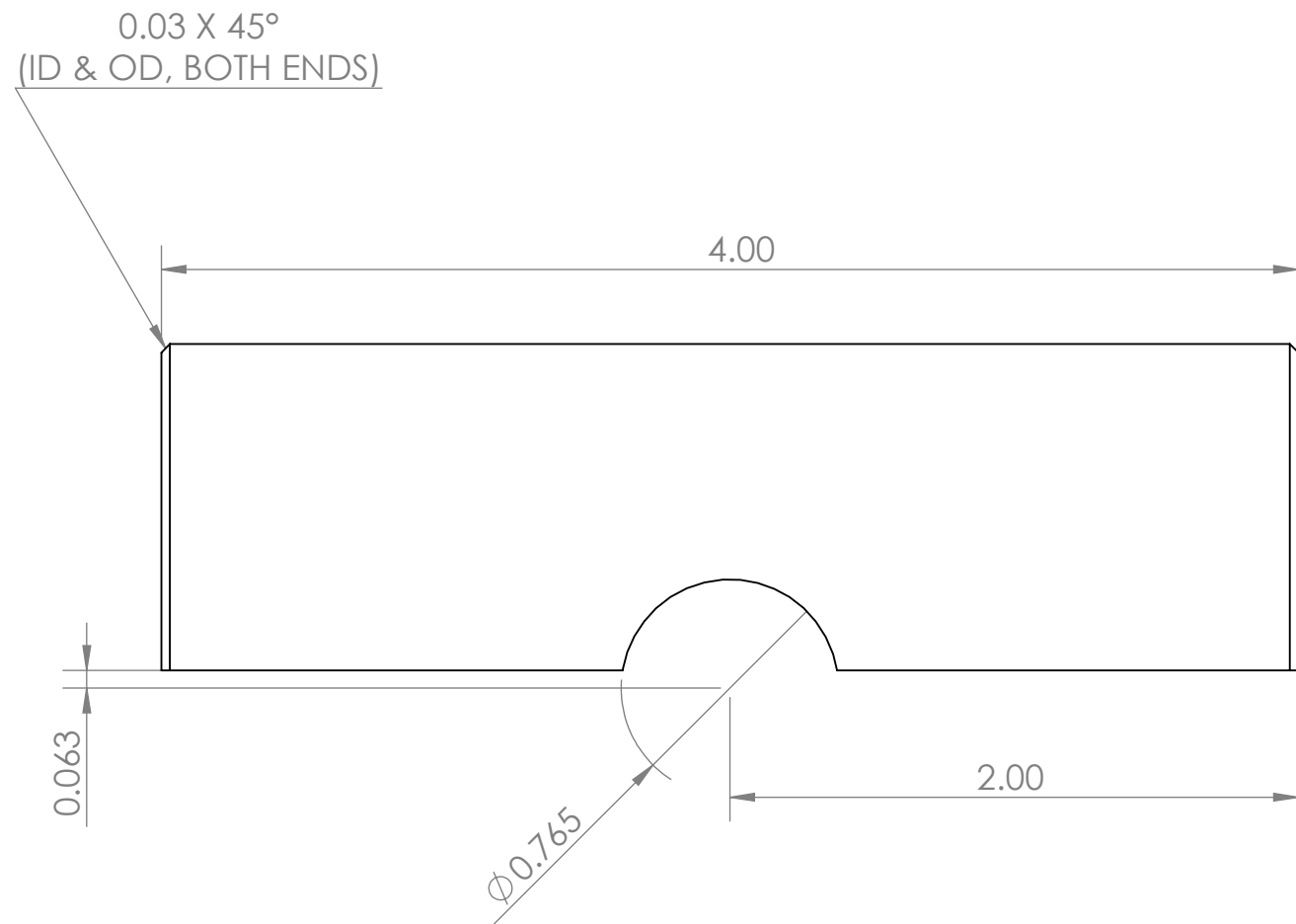


PART NAME	PART/DWG. NO.	O.D. DIM.	I.D. DIM.
S/T P1 & ALL P4 MIN	CPIC050	2.020	1.500 +.005/-0
S/T P1 & ALL P4 MAX	CPIC051	2.420	1.500 +.005/-0
S/T & SPEEDWAY P2 & P3 MIN	CPIC052	1.475	1.125 +.005/-0
S/T & SPEEDWAY P2 & P3 MAX	CPIC053	1.875	1.125 +.005/-0
SPEEDWAY P1 MIN	CPIC054	2.540	2.000 +.005/-0
SPEEDWAY P1 MAX	CPIC055	2.940	2.000 +.005/-0
R/C P3 MIN	CPIC056	2.010	1.750 +.005/-0
R/C P3 MAX	CPIC057	2.410	1.750 +.005/-0
R/C P2 MIN	CPIC058	2.250	1.750 +.005/-0
R/C P2 MAX	CPIC059	2.650	1.750 +.005/-0



PROPRIETARY AND CONFIDENTIAL
 THE INFORMATION CONTAINED IN THIS
 DRAWING IS THE SOLE PROPERTY OF
 CHECKERED PAST MACHINE.
 ANY REPRODUCTION IN PART OR AS A
 WHOLE WITHOUT THE WRITTEN
 PERMISSION OF CHECKERED PAST
 MACHINE IS PROHIBITED.

UNLESS OTHERWISE SPECIFIED:
 DIMENSIONS ARE IN INCHES
 TOLERANCES:
 FRACTIONAL: $\pm 1/32$
 ANGULAR: $\pm 0.5^\circ$
 2 PLACE DECIMAL: $\pm .02$
 3 PLACE DECIMAL: $\pm .005$
 INTERPRET GEOMETRIC
 TOLERANCING PER: ANSI Y14.5M-1994
 MATERIAL
 6061 ALUMINUM
 FINISH
 AS MACHINED
 DO NOT SCALE DRAWING

	NAME	DATE
DRAWN	C. Phillips	12/10/18
CHECKED		
ENG APPR.		
MFG APPR.		
Q.A.		

TITLE: Guage Caps		
SIZE B	DWG. NO. CPIC049	REV
SCALE:	WEIGHT:	SHEET 1 OF 1

